

Kissimmee Multi Specialty Clinic Building

Office Space for Lease



201 Hilda Street
Kissimmee, FL 34741

Property Details:

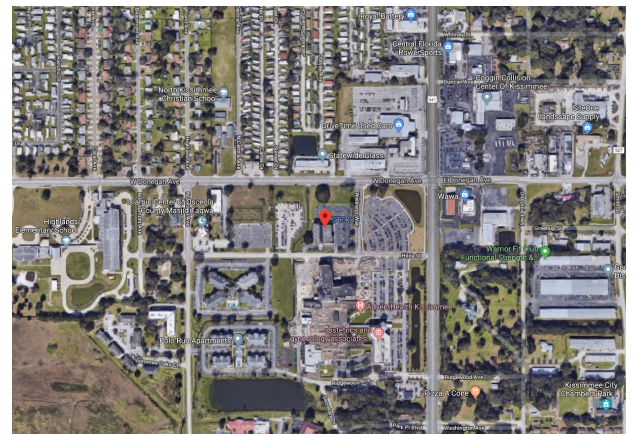
| | |
|-----------------------|----------------|
| Total Space Available | 1,260 RSF |
| Rental Rate | TBD |
| Min. Divisible | 1,260 RSF |
| Max. Contiguous | 1,260 RSF |
| Property Type | Office |
| Property Sub Type | Medical Office |

Spaces:

| Suite | Space Available | Min Divisible | Max Contiguous | Price | Date Available |
|-------|-----------------|---------------|----------------|-------|----------------|
| 23 | 1,260 RSF | 1,260 RSF | 1,260 RSF | TBD | 2/1/2025 |

Features:

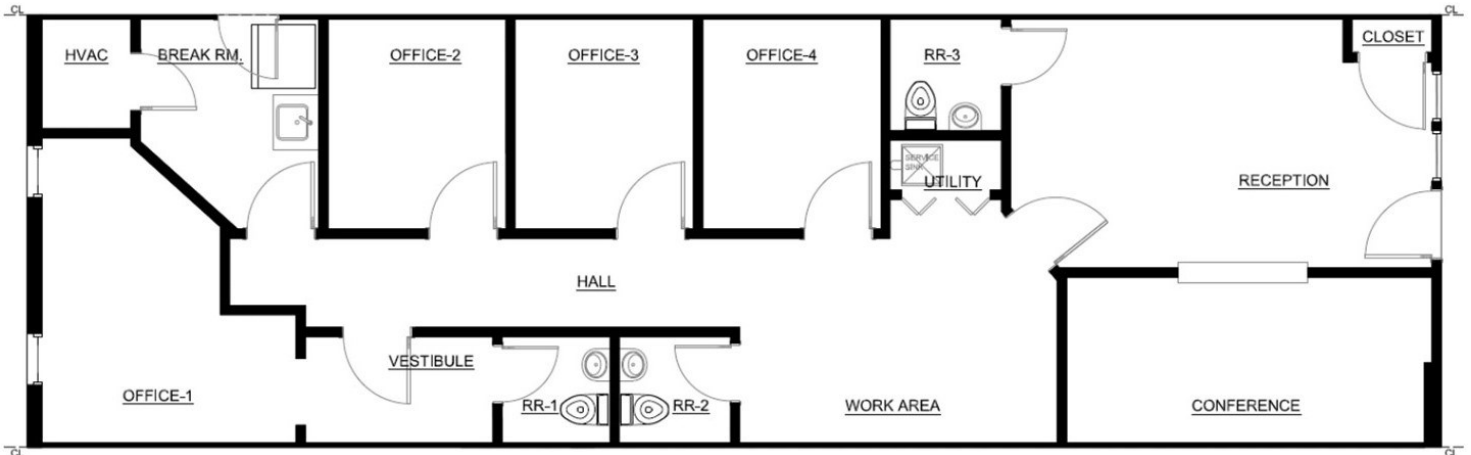
- Medical office complex adjacent to AdventHealth Kissimmee Hospital campus off of Orange Blossom Trail
- Minutes from Osceola Parkway, Hunters Creek and the Florida Turnpike
- Plenty of convenient parking
- Space shows well with new flooring & light grey walls



Commercial Sales & Leasing | Property Management | Project Development | Acquisitions & Dispositions | Construction Services

Southeastern Realty Group, Inc. - 933 Lee Road Suite 400 - Orlando, FL 32810 - t: 407-629-5595 - f: 407-645-2035

Floorplan:



201 Hilda Street, Suite 23
Kissimmee, FL 34741

Commercial Sales & Leasing | Property Management | Project Development | Acquisitions & Dispositions | Construction Services
Southeastern Realty Group, Inc. - 933 Lee Road Suite 400 - Orlando, FL 32810 - t: 407-629-5595 - f: 407-645-2035

The information contained herein is from sources deemed reliable, but no warranty or representation is made as to the accuracy thereof and no liability may be imposed.