

# Victoria Square

## Retail/Office Space Available



1720 & 1780 S. Woodland Blvd.,  
DeLand, FL 32720

### Property Details:

Total Space Available	4,880 SF
Rental Rate	TBD
Min. Divisible	1,880 SF
Max. Contiguous	3,000 SF
Property Type	Retail
Year Built	1990
Traffic Count	59,530 AADT
Zoning Description	C-3

### Spaces:

Suite	Space Available	Min Divisible	Max Contiguous	Price	Date Available	Description
1720	3,000 SF	3,000 SF	3,000 SF	TBD	120 Days	Retail/Office
1780	1,880 SF	1,880 SF	1,880 SF	TBD	120 Days	Retail/Office

### Location Description:

- Nearby Tenants include Wawa, Gator's Dockside Restaurant, UPS Store, Pinch A Penny, & Future Home to State of the Art 18,000 SF Pickleball Wellness Center
- Busy corner of 15A (Spring Garden) & Hwy 17-92
- 2022 estimated average household income: \$84,076
- 2022 estimated population within 5 miles: 80,711
- 2022 estimated households within 5 miles: 31,288

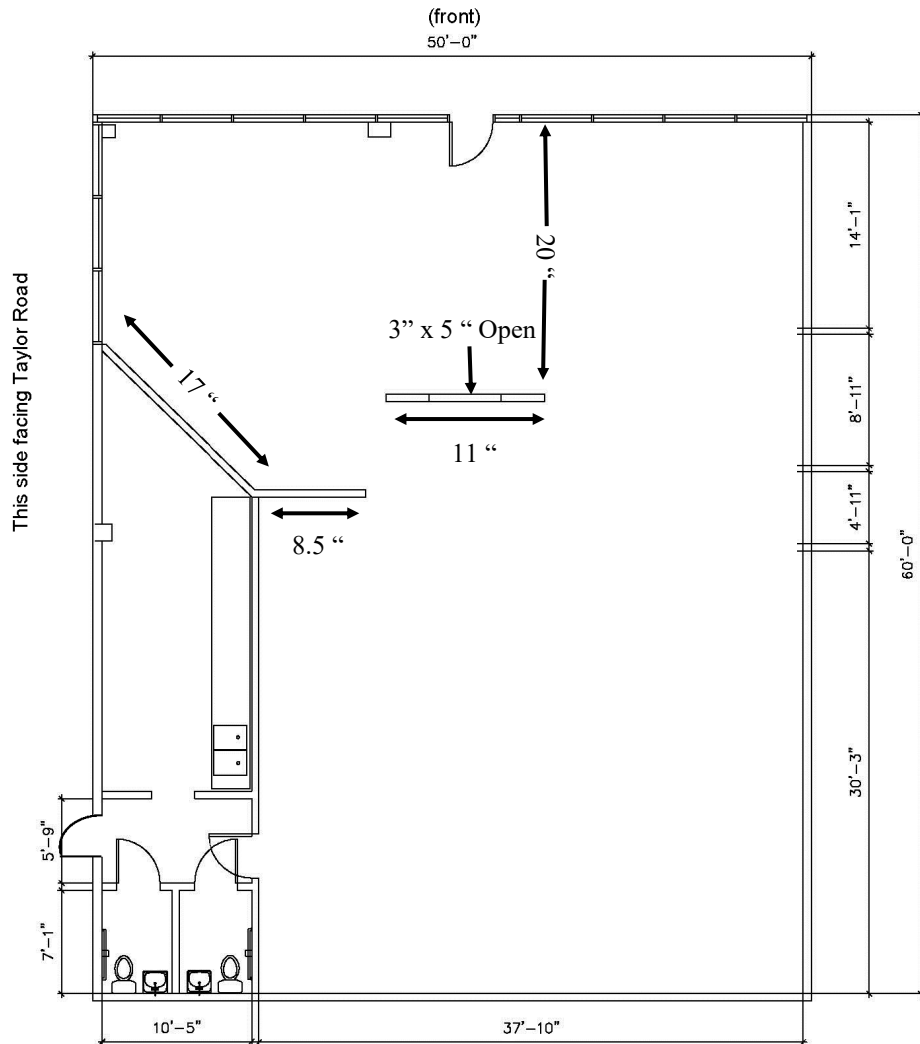


Commercial Sales & Leasing | Property Management | Project Development | Acquisitions & Dispositions | Construction Services

Southeastern Realty Group, Inc. - 933 Lee Road Suite 400 - Orlando, FL 32810 - t: 407-629-5595 - f: 407-645-2035

# Floor Plan:

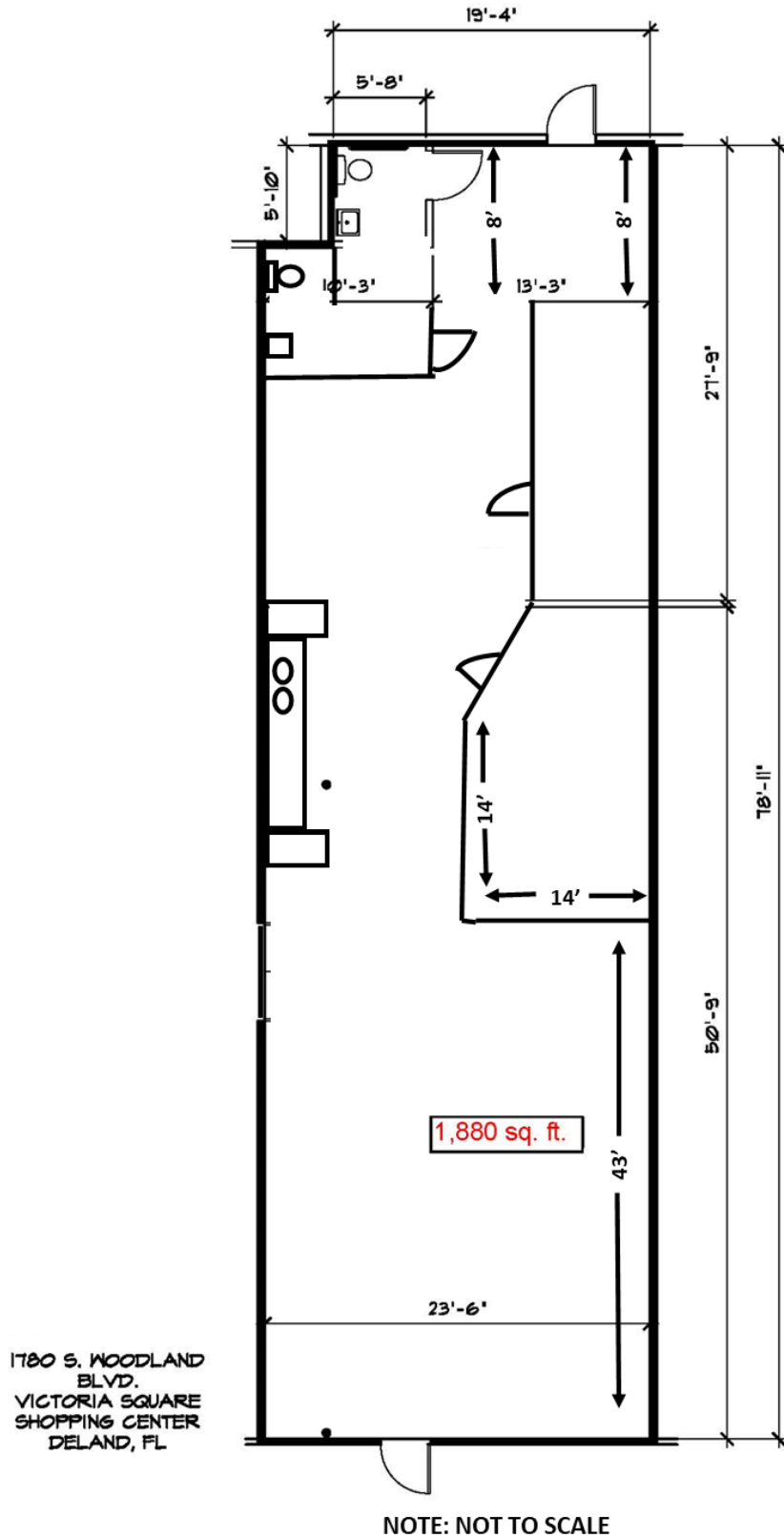
VICTORIA PLAZA  
DELAND FL  
1720 S. WOODLAND BLVD.  
3,000 SF



(some parking in rear)

**Southeastern Realty Group**  
933 Lee Road, Suite 400, Orlando, Florida 32810  
407-629-5595 phone, 407-645-2035 fax  
Visit our website at [www.southeasternrealty.com](http://www.southeasternrealty.com)

# Floor Plan:



Southeastern Realty Group  
933 Lee Road, Suite 400, Orlando, Florida 32810  
407-629-5595 phone, 407-645-2035 fax  
Visit our website at [www.southeasternrealty.com](http://www.southeasternrealty.com)