

The Enterprise Building

Office Space for Lease



1110 Douglas Avenue
Altamonte Springs, Florida 32714

Property Details:

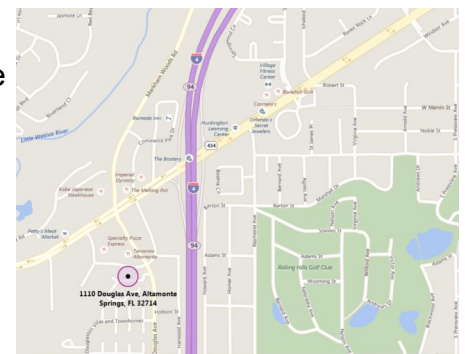
Total Space Available	820 RSF
Rental Rate	Negotiable
Min. Divisible	820 RSF
Max. Contiguous	820 RSF
Property Type	Office
Zoned	MOC-1
Building Class	B
Year Built	1986
Lot Size	2.18 AC

Spaces:

Suite	Space Available	Term	Price PSF	Date Available	Description
3010	820 RSF	TBD	TBD	July 1, 2025	Office Suite

Location Description:

- Zoning allows for office, professional, medical, and personal service type uses
- Beautiful 3-story brick building with recent renovations
- Rent includes electric, interior & exterior maintenance, and janitorial service Mon. - Fri.
- Exterior monument signage availability
- Excellent parking
- Easy access to local amenities

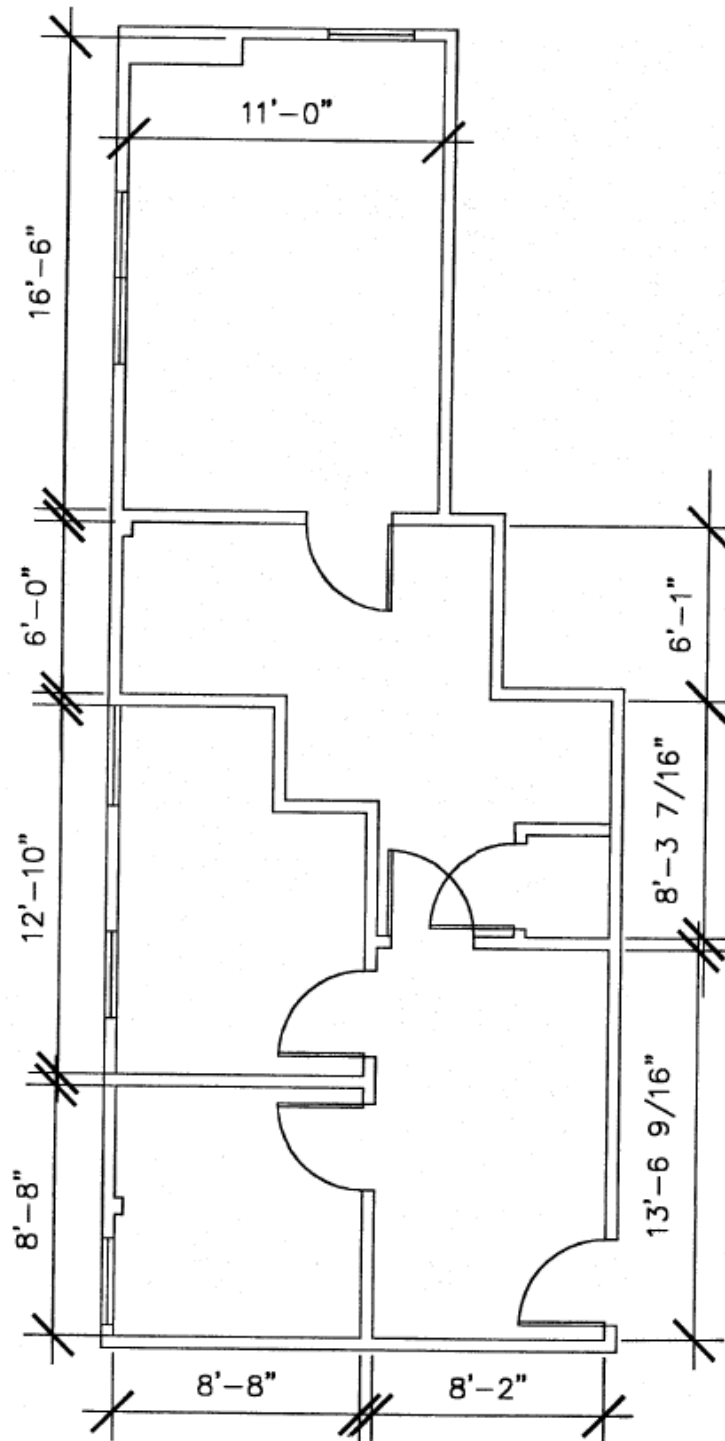


Commercial Sales & Leasing | Property Management | Project Development | Acquisitions & Dispositions | Construction Services

Southeastern Realty Group, Inc. - 933 Lee Road Suite 400 - Orlando, FL 32810 - t: 407-629-5595 - f: 407-645-2035
Visit our website at www.southeasternrealty.com

The information contained herein is from sources deemed reliable, but no warranty or representation is made as to the accuracy thereof and no liability may be imposed.

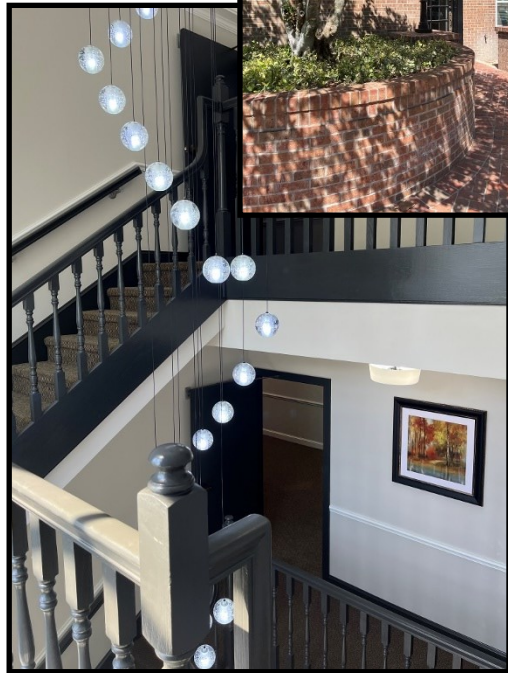
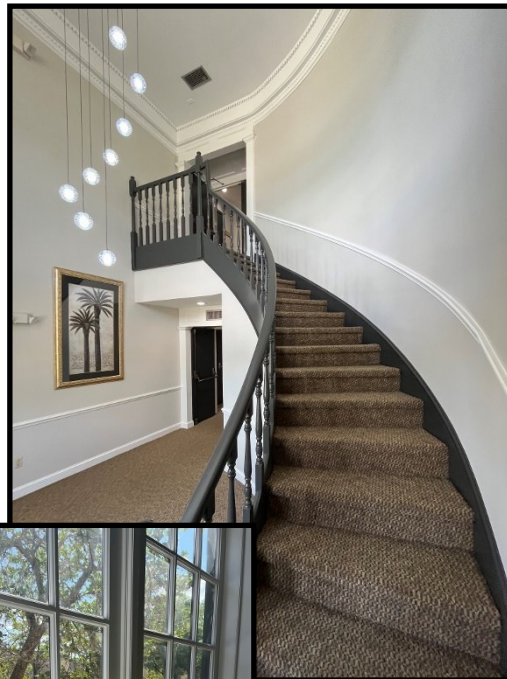
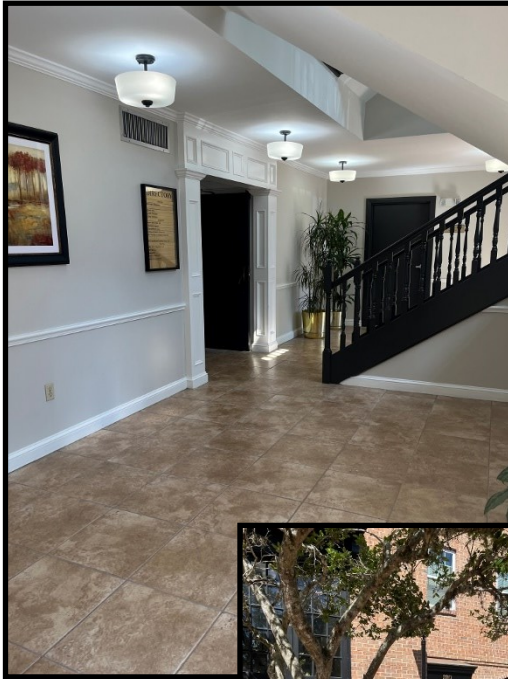
Suite 3010 - Floor Plan:



820 RSF

Southeastern Realty Group
933 Lee Road, Suite 400, Orlando, Florida 32810
407-629-5595 phone, 407-645-2035 fax
Visit our website at www.southeasternrealty.com

Building Photos:



Southeastern Realty Group
933 Lee Road, Suite 400, Orlando, Florida 32810
407-629-5595 phone, 407-645-2035 fax
Visit our website at www.southeasternrealty.com

The information contained herein is from sources deemed reliable, but no warranty or representation is made as to the accuracy thereof and no liability may be imposed.