

# Rosewood Plaza

## Retail/ Office Space for Lease



5584 N. Orange Blossom Trail  
Orlando, FL 32810

### Property Details:

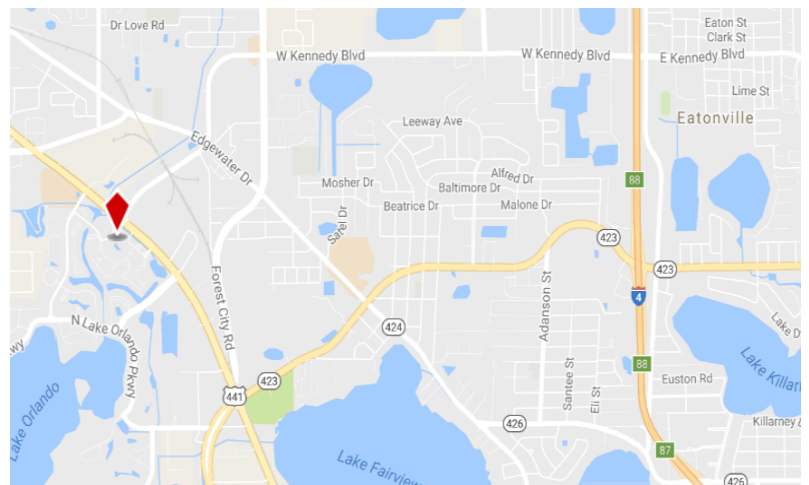
Total Space Available	1,000 SF
Rental Rate	Negotiable NNN
Min. Divisible	1,000 SF
Max. Contiguous	1,000 SF
Property Type	Retail
Property Sub-type	Office
Building Size	28,265 SF

### Spaces:

Suite	Space Available	Min Divisible	Max Contiguous	Price	Available	Description
5584	1,000 SF	1,000 SF	1,000 SF	Upon Request	Now	Retail/Office

### Location Description:

- Single story building
- Quick Access to I-4 and downtown
- Pylon signage available
- 24 hour traffic count: 30,500 vehicles
- Ample and convenient parking
- Restaurants and shopping nearby
- AC-1/W Zoning



Commercial Sales & Leasing | Property Management | Project Development | Acquisitions & Dispositions | Construction Services

Southeastern Realty Group, Inc. - 933 Lee Road Suite 400 - Orlando, FL 32810 - t: 407-629-5595 - f: 407-645-2035

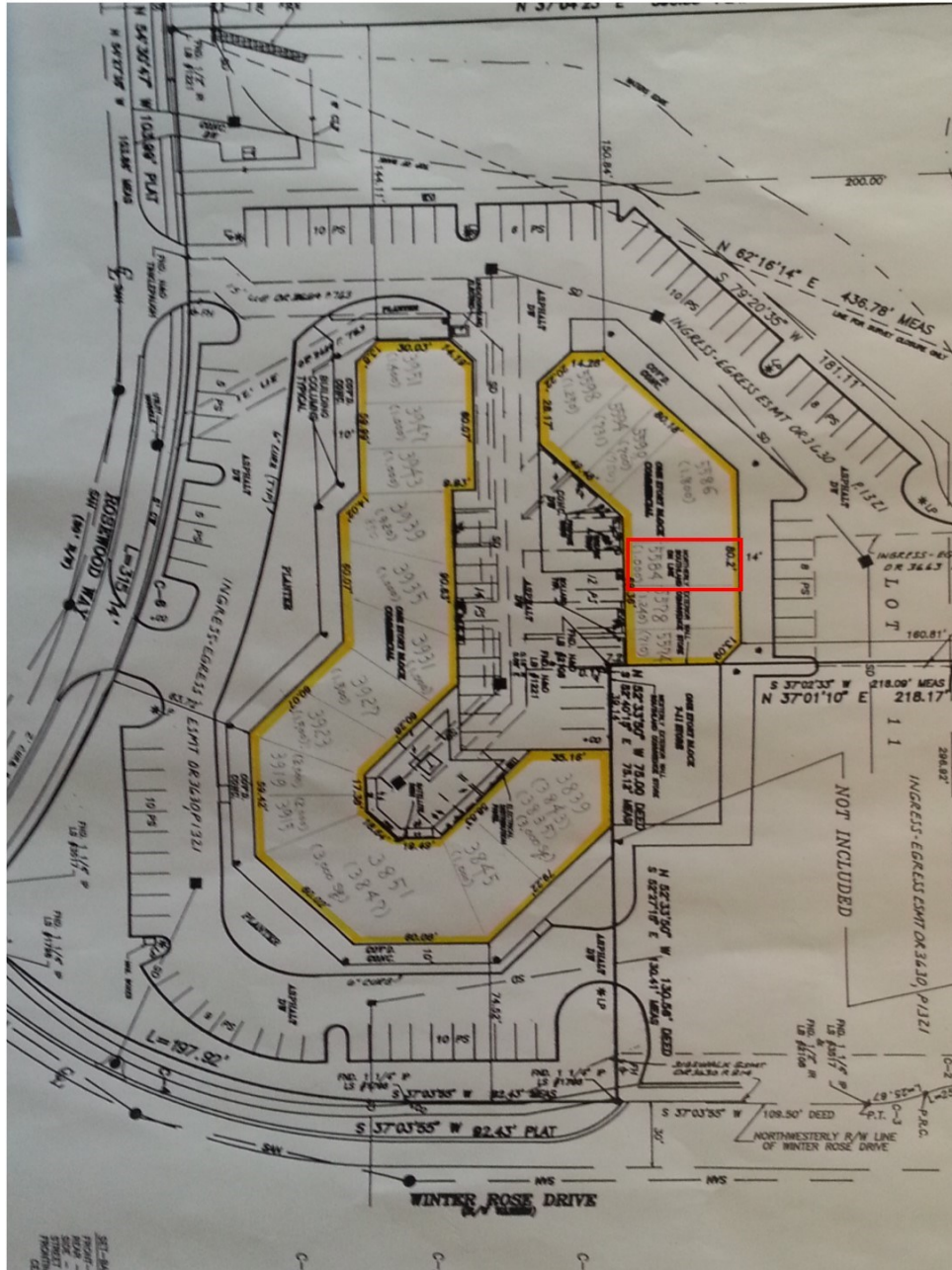
# Site Plan:

## Rosewood Plaza

5584 N. Orange Blossom Trail

Orlando, FL 32810

1,000 SF



**Southeastern Realty Group**  
933 Lee Road, Suite 400, Orlando, Florida 32810  
407-629-5595 phone, 407-645-2035 fax  
Visit our website at [www.southeasternrealty.com](http://www.southeasternrealty.com)

The information contained herein is from sources deemed reliable, but no warranty or representation is made as to the accuracy thereof and no liability may be imposed.