

The Greene on Douglas

Office Space for Lease



1110 Douglas Avenue,
Altamonte Springs, Florida 32714

Property Details:

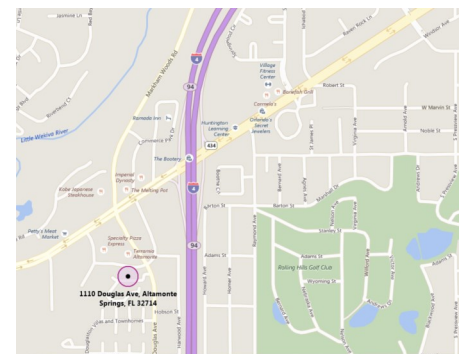
Total Space Available	4,261 RSF
Rental Rate	TBD
Min. Divisible	1,858 RSF
Max. Contiguous	2,403 RSF
Property Type	Office
Zoned	MCO-1
Building Class	B
Year Built	1986

Spaces:

Suite	Space Available	Min Divisible	Max Contiguous	Price	Date Available	Description
1018	1,858 RSF	1,858 RSF	1,858 RSF	Negotiable	Now	
2000	2,403 RSF	2,403 RSF	2,403 RSF	Negotiable	Now	

Location Description:

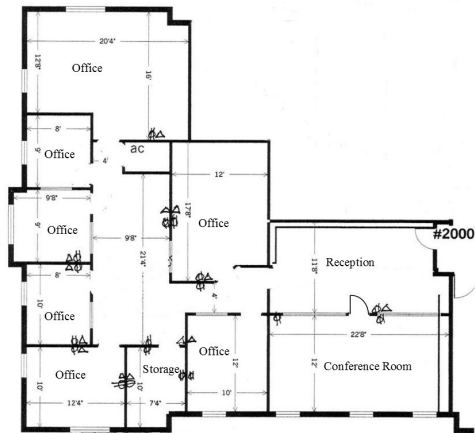
- Beautiful 3-story brick building
- Tiled lobby
- Exterior staircase with patio entrance
- Ample parking
- Convenient access to Highway 434, Interstate 4, and Highway 436



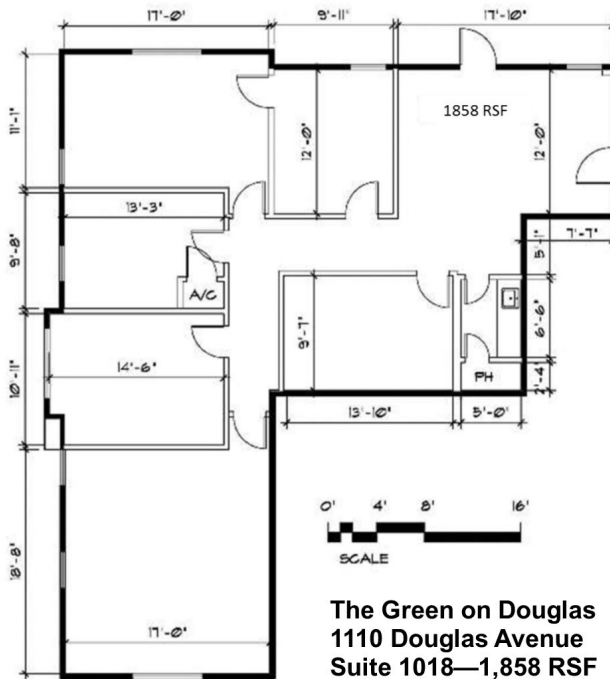
Commercial Sales & Leasing | Property Management | Project Development | Acquisitions & Dispositions | Construction Services

Southeastern Realty Group, Inc. - 933 Lee Road Suite 400 - Orlando, FL 32810 - t: 407-629-5595 - f: 407-645-2035

Floor Plans:



**The Green on Douglas
1110 Douglas Avenue
Suite 2000 - 2,403 RSF**



**The Green on Douglas
1110 Douglas Avenue
Suite 1018—1,858 RSF**

Southeastern Realty Group
 933 Lee Road, Suite 400, Orlando, Florida 32810
 407-629-5595 phone, 407-645-2035 fax
 Visit our website at www.southeasternrealty.com