

Shoppes of Fairview

Retail/ Office Space for Lease



4345 & 4351 Edgewater Drive,
Orlando, FL 32804

Property Details:

Total Space Available	6,580 SF
Rental Rate	TBD
Property Type	Retail
Building Size	17,094 SF
Lease Type	NNN
Zoned	C-2

Spaces:

Suite	Space Available	Min Divisible	Max Contiguous	Price	Date Available	Description
800	2,830 SF	2,830 SF	2,830 SF	TBD	7/1/18	Retail/ Office
600	1,922 SF	1,922 SF	3,750 SF	TBD	Available within 60 days	Retail/ Office
700	1,828 SF	1,828 SF	3,750 SF	TBD	Available within 60 days	Retail/ Office

Location Description:

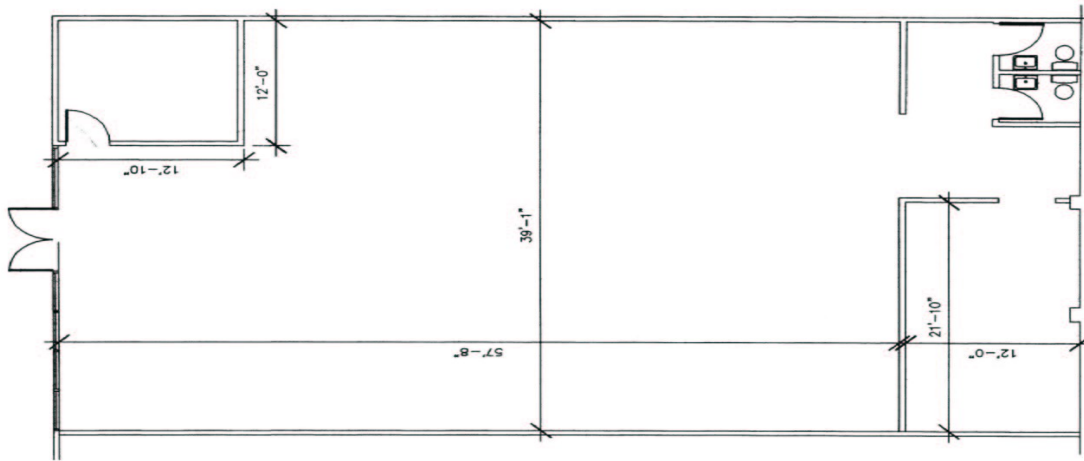
- Excellent location (Corner of Edgewater Dr. & Fairbanks Ave)
- Pylon signage available
- Easy access downtown Orlando, Maitland & Winter Park
- Close proximity to I-4
- 21,500 cars on Fairbanks Ave., 23,500 cars on Edgewater Ave.
- Ample parking
- Mix of national and local tenants



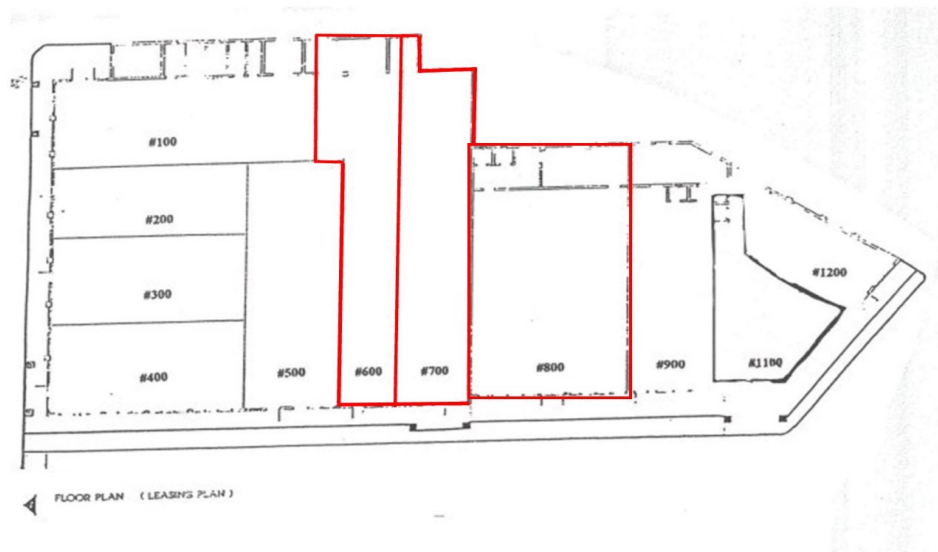
Commercial Sales & Leasing | Property Management | Project Development | Acquisitions & Dispositions | Construction Services

Southeastern Realty Group, Inc.—933 Lee Road Suite 400—Orlando, FL 32810—t: 407-629-5595—f: 407-645-2035

Floor Plans:



Suite 800 - 2,830 SF



Suite 600 - 1,922 SF

Suite 700 - 1,828 SF

Suite 800 - 2,830 SF

Southeastern Realty Group
933 Lee Road, Suite 400, Orlando, Florida 32810
407-629-5595 phone, 407-645-2035 fax
Visit our website at www.southeasternrealty.com