

Brick Court Property

Office Space for Lease



5931 Brick Court, Winter Park, Florida 32792

Property Details:

Total Space Available	1,435 SF
Rental Rate	TBD
Min. Divisible	200 SF
Max. Contiguous	850 SF
Property Type	Office
Property Sub-type	Office Building
Zoning Description	PD

Spaces:

Suite	Space Available	Price	Date Available	Description
130	850 RSF	TBD	Now	Office Use of conference room and breakroom
166	385 RSF	TBD	June 1, 2018	Office Use of conference room and breakroom
172	200 RSF	TBD	Now	Office Use of conference room and breakroom

Location Description:

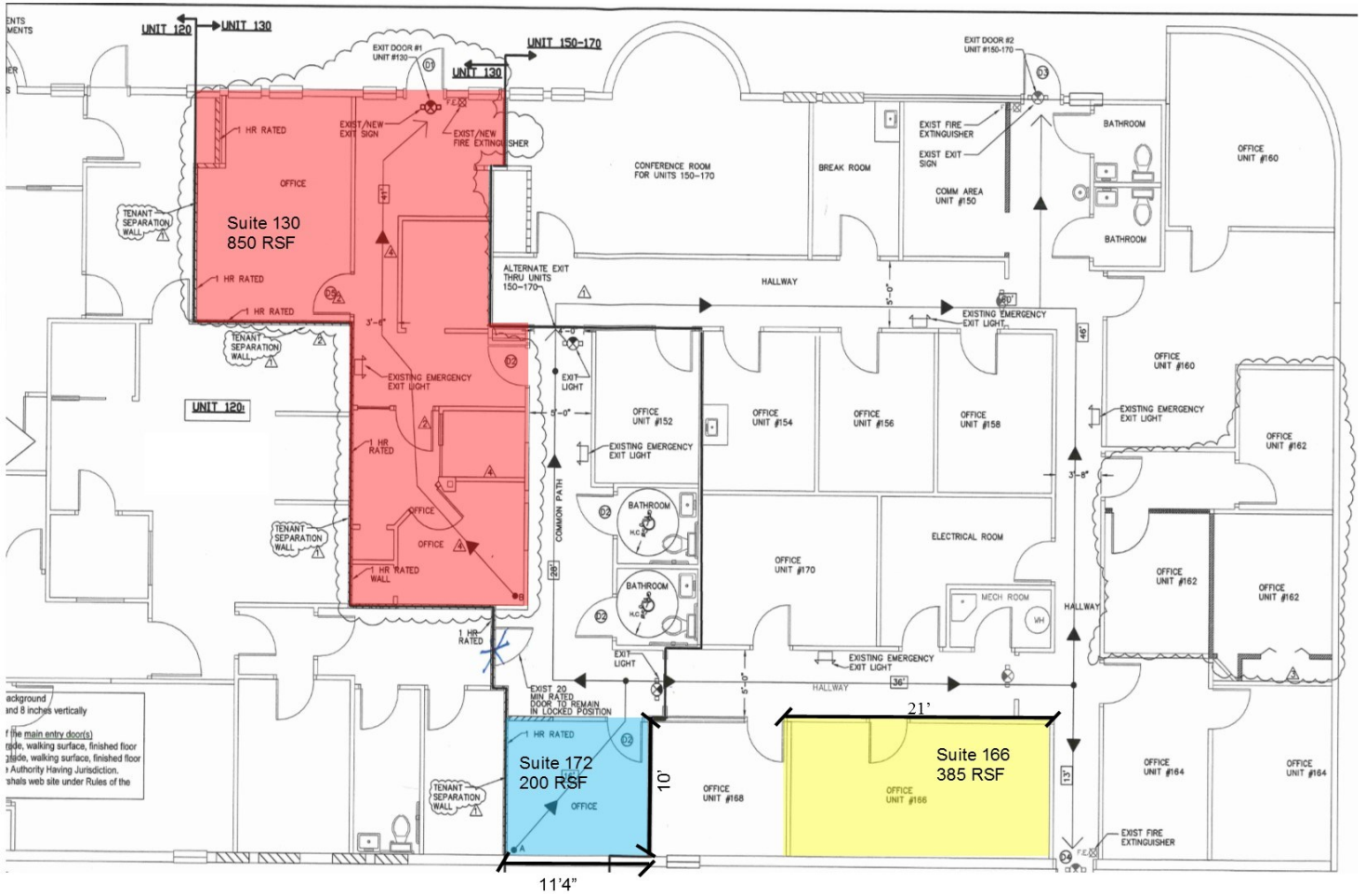
- Excellent parking
- Ideal for small business
- Located just off Aloma Avenue with easy access



Commercial Sales & Leasing | Property Management | Project Development | Acquisitions & Dispositions | Construction Services

Southeastern Realty Group, Inc. - 933 Lee Road Suite 400 - Orlando, FL 32810 - t: 407-629-5595 - f: 407-645-2035

Floor Plan:



5931 Brick Ct. Suite 130 - 850 RSF

5931 Brick Ct. Suite 166 - 385 RSF

5931 Brick Ct. Suite 172 - 200 RSF

Southeastern Realty Group
 933 Lee Road, Suite 400, Orlando, Florida 32810
 407-629-5595 phone, 407-645-2035 fax
 Visit our website at www.southeasternrealty.com