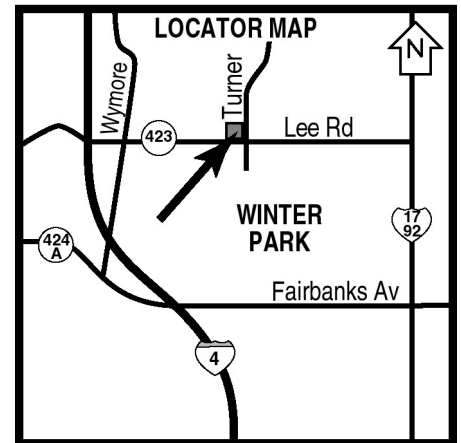


**Title Center
2211 Lee Road
Winter Park, FL 32789**

**Sublease
Available**



Features:

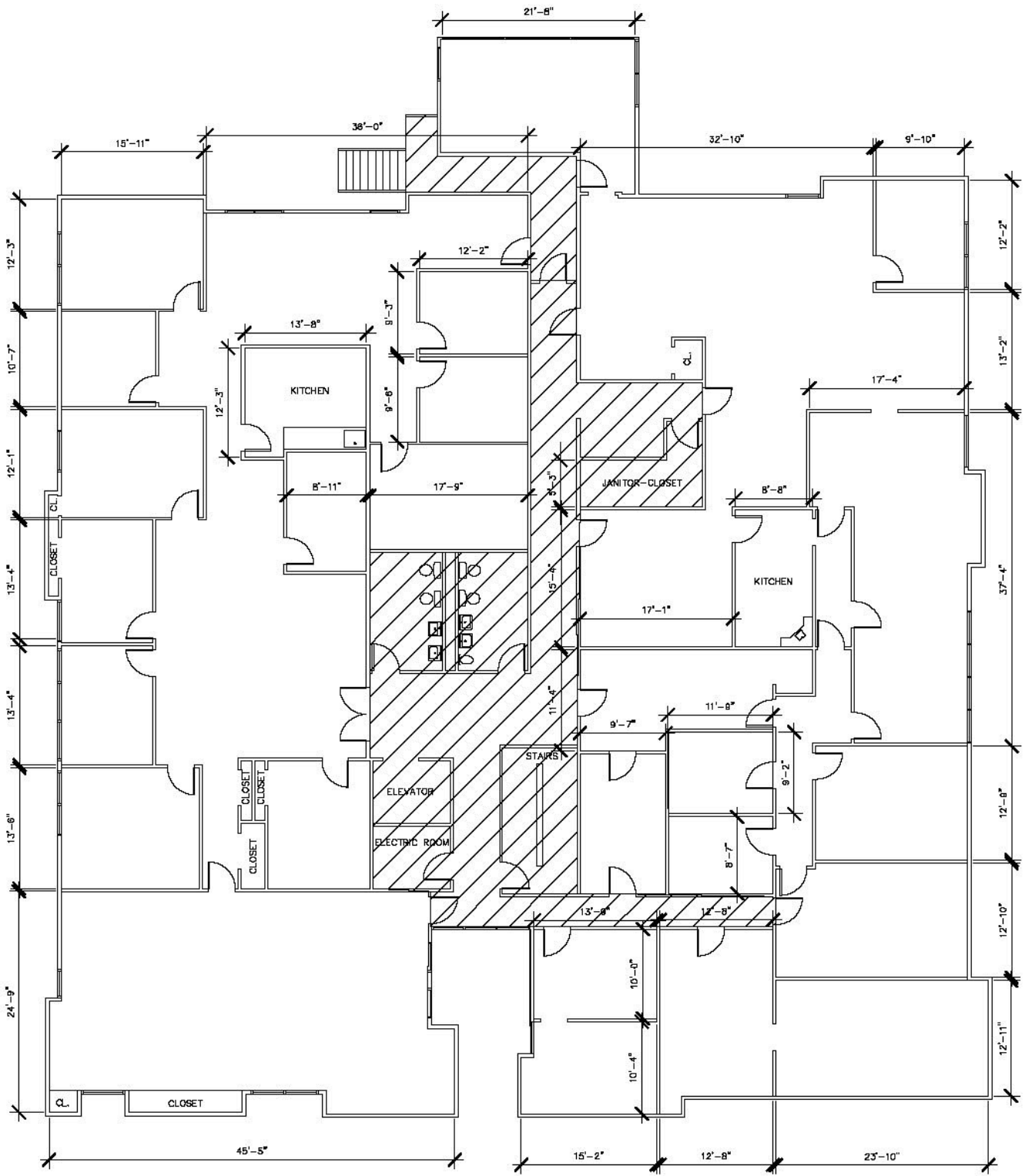
- Space available: 10,779 rentable sq. ft. Professional Office Suite Sublease
- Primary lease expires 10/31/2012
- Space is dividable
- Two story, full-service office building
- Convenient access to I-4 and US Highway 17-92
- Minutes from Downtown Winter Park, Maitland and Downtown Orlando



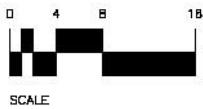
933 Lee Road, Suite 400, Orlando, FL 32810
407-629-5595 phone, 407-645-2035 fax
Visit our website at southeasternrealty.com

Trish DeBell
407-629-5595 x 236
tdebell@southeasternrealty.com

The information contained herein is from sources deemed reliable, but no warranty or representation is made as to the accuracy thereof and no liability may be imposed.



SECOND FLOOR
RENTABLE AREA: 10,779 SF



DATE: 09-12-07
 PROJECT: 2211.LEE.RD.
 DRAWN BY: CJ
 CHECKED BY: T.D
 SHEET 1 OF 1

EXISTING PLAN:
 EXECUTIVE SQUARE
 2211.LEE.RD.

SOUTHEASTERN REALTY GROUP
 933 LEE RD SUITE #400
 ORLANDO FLORIDA 32810

REVISIONS:
▲ REVISION1
▲ REVISION2
▲ REVISION3
▲ REVISION4
▲ REVISION5