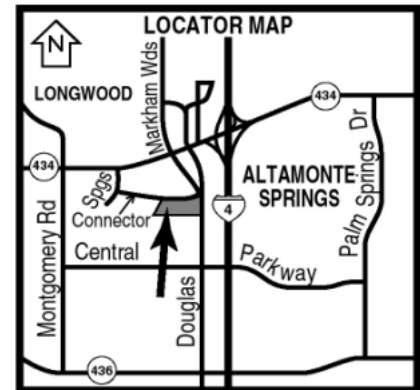
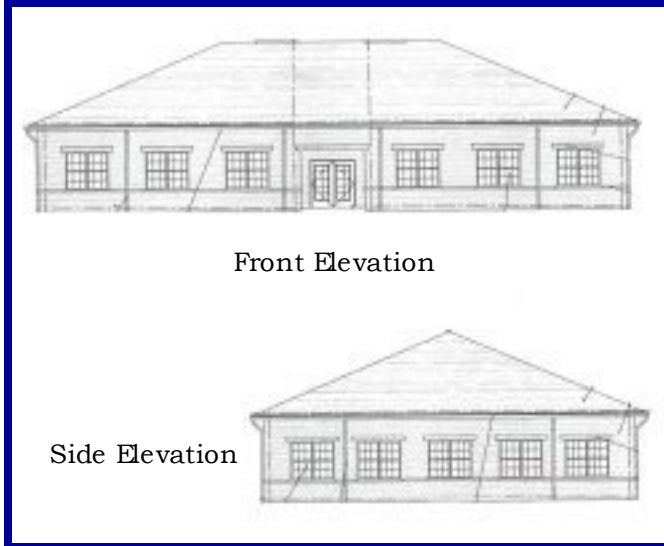


The Greene on Douglas II

1110 Douglas Avenue
Altamonte Springs, FL

2,200 – 4,400 Sq. Ft.
New Office Space



Features:

- 2,200 Sq. Ft. — 4,400 Sq. Ft. Brand New Office Space , \$20.00 per square foot, full service
- Tenant Improvements build to suit
- Beautiful single story brick building
- Great location — convenient access to Highway 434, Interstate 4 and Highway 436
- Up to four (4) parking spaces per 1,000 sf
- Estimated average household income: \$73,914 within five miles
- Population: 212,111 within five miles
- Zoned MOC1



933 Lee Road, Suite 400, Orlando, FL 32810
407-629-5595 phone, 407-645-2035 fax
Visit our website at southeasternrealty.com

Trish DeBell
407-629-5595 x 236
tdebell@southeasternrealty.com

