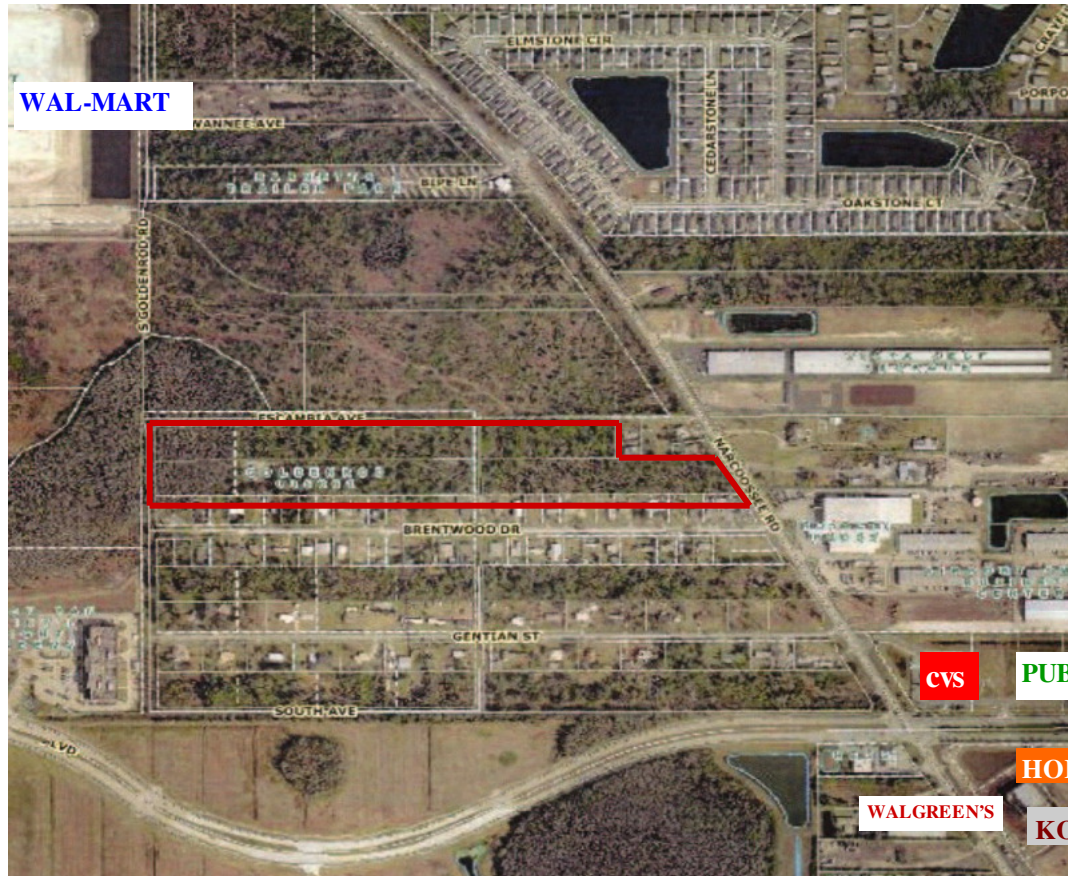


# 15 Acres at 6766 Narcoossee Road Prime Location – Just North of Lee Vista Blvd. “REDUCED \$2,995,000”



## Features:

- Zoned Industrial 1/Industrial 5 with 181± feet on Narcoossee Road
- Widening of Narcoossee recently approved by City
- Income producing cell tower at rear
- Easy access to SR 528 and to the airport
- Nearby Home Depot, Kohl's, Walgreens, CVS, Publix, Wal-Mart SuperCenter, Taco Bell KFC, and more
- Easy drive to Burnham Institute, UCF Medical School, proposed future VA Hospital, Nemours Hospital and Lake Nona



933 Lee Road, Suite 400, Orlando, FL 32810

407-629-5595 phone, 407-645-2035 fax

Please visit our website at [southeasternrealty.com](http://southeasternrealty.com)

**Al Clark**

**407-629-5595 x 228**

**[AlClark@southeasternrealty.com](mailto:AlClark@southeasternrealty.com)**