

# 501 Wymore Road Winter Park, FL 32789

## EXCEPTIONAL LOCATION—I-4 CORRIDOR



**100%  
LEASED**

### Features:

- Two-story, full-service office building
- 26,436 square feet available
- Over 4 parking spaces per 1,000 square feet
- Serviced by Tri-County Transit Bus Line
- Strategic location offers quick access to I-4, Lee Road, Fairbanks Avenue and US Highway 17-92
- **I-4 signage available**
- Landscaped

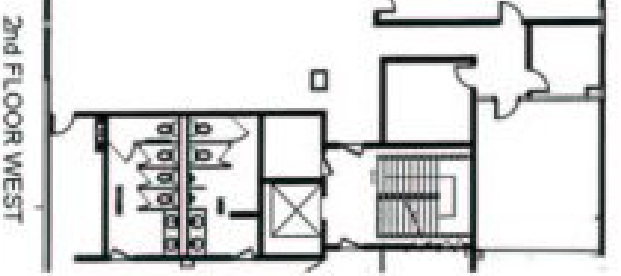
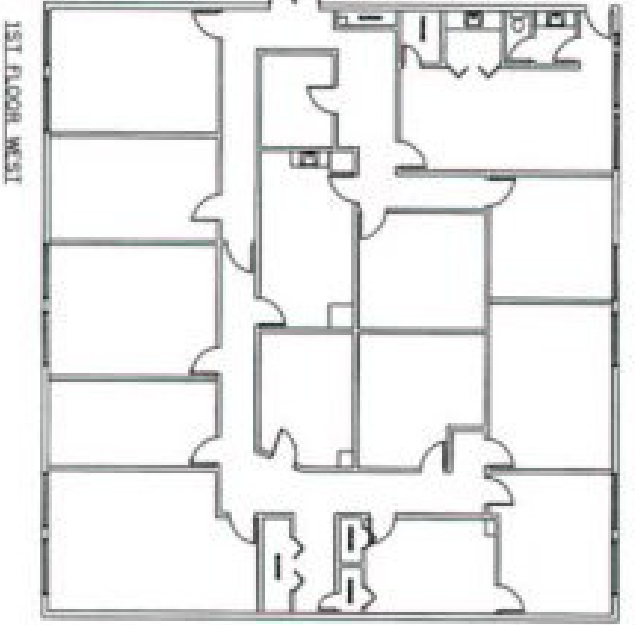
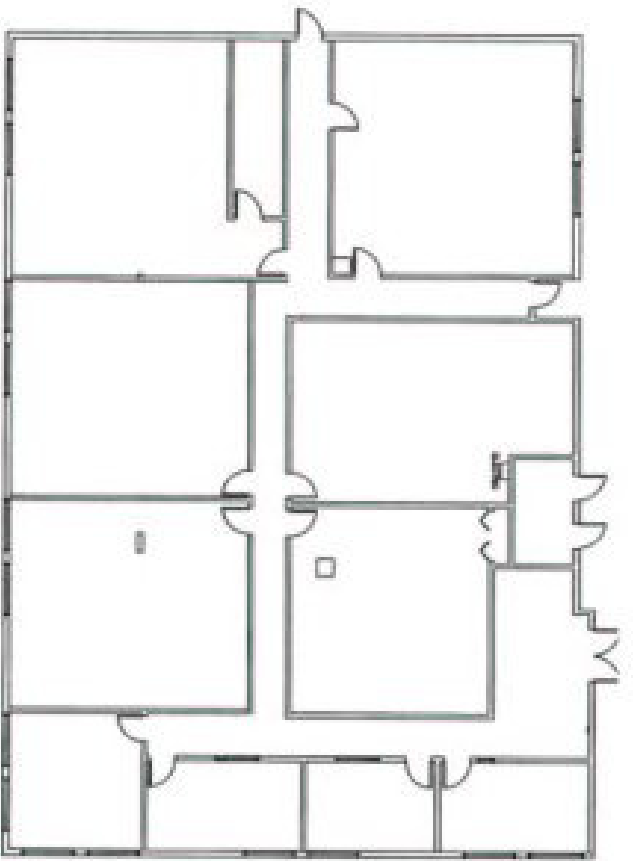


933 Lee Road, Suite 400, Orlando, FL 32810  
407-629-5595 phone, 407-645-2035 fax  
Visit our website at [southeasternrealty.com](http://southeasternrealty.com)

**Bob Johnson**  
407-629-5595 x 231  
[bojo@southeasternrealty.com](mailto:bojo@southeasternrealty.com)

Southeastern Realty Group, Inc.

The information contained herein is from sources deemed reliable, but no warranty or representation is made as to the accuracy thereof and no liability may be imposed.



# 501 Wymore Road—Floor Plan