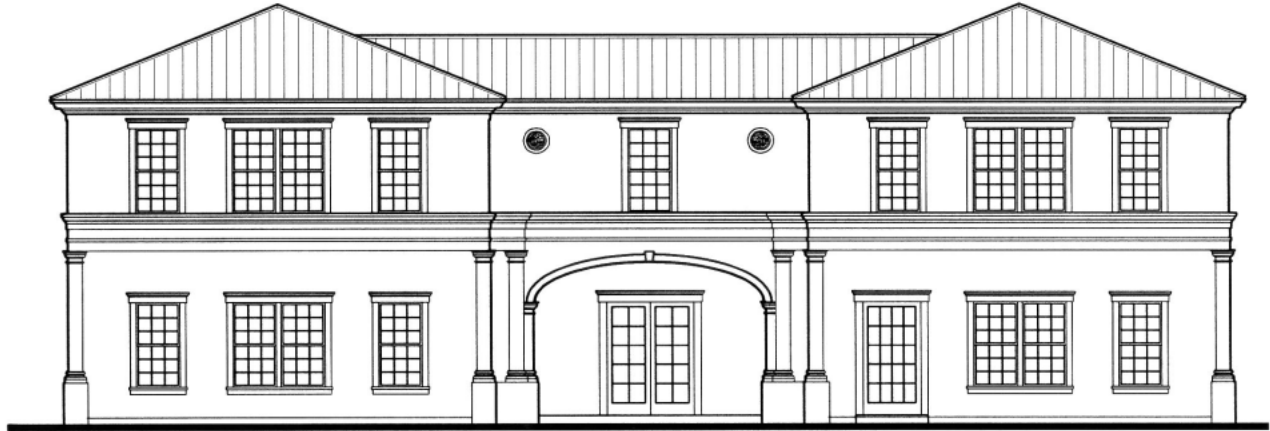


**1300 Minnesota Ave.  
Winter Park FL**

**100% Leased**



**New, Class A Office Space**

### Features:

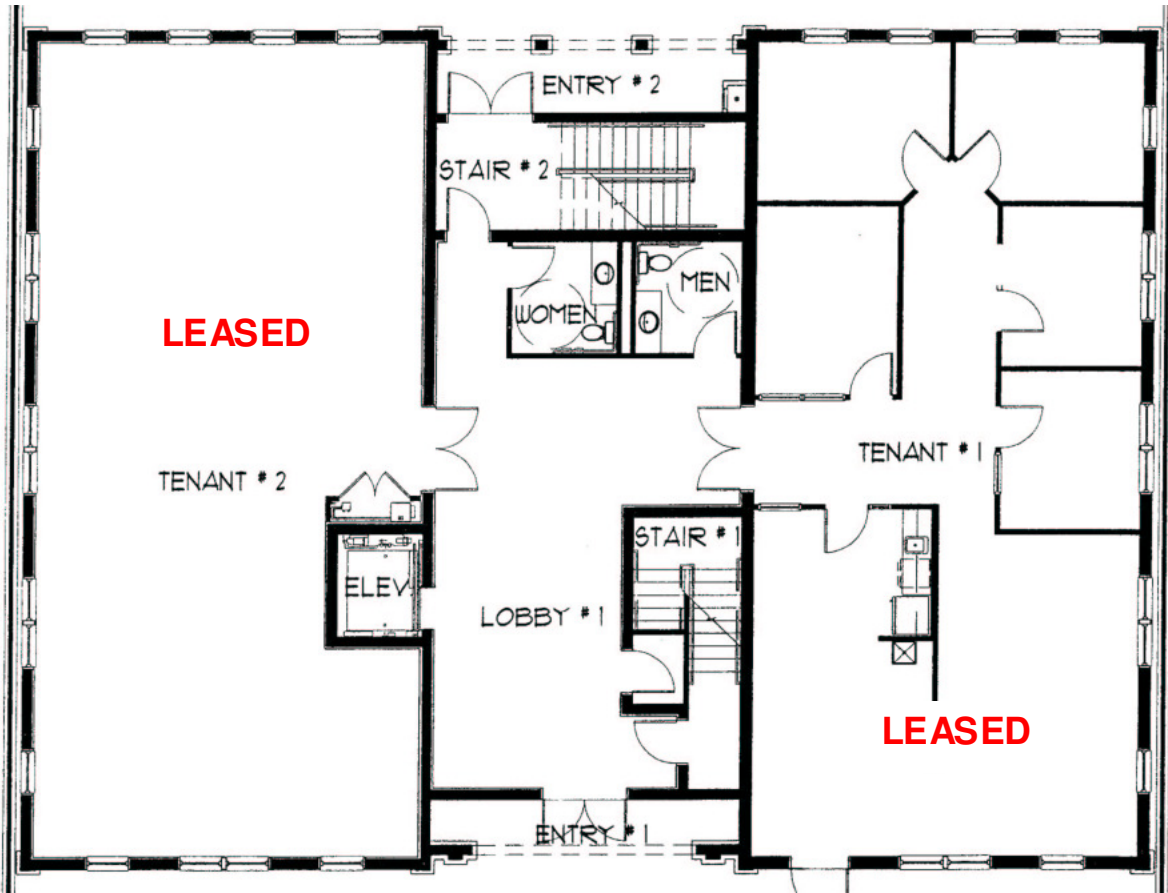
- Newly Constructed Office Space
- Ample Parking, 4 Spaces Per 1,000
- Lushly Landscaped
- Centrally and Conveniently Located in Winter Park
- Easy Access to US Hwy 17-92 and Interstate 4



933 Lee Road, Suite 400, Orlando, FL 32810  
407-629-5595 phone, 407-645-2035 fax  
Please visit our website at [southeasternrealty.com](http://southeasternrealty.com)

**Bryan Johnson**  
**407-629-5595 x 226**  
**[bjohn@southeasternrealty.com](mailto:bjohn@southeasternrealty.com)**

### 1300 Minnesota—First Floor Plan



### 1300 Minnesota—Second Floor Plan

